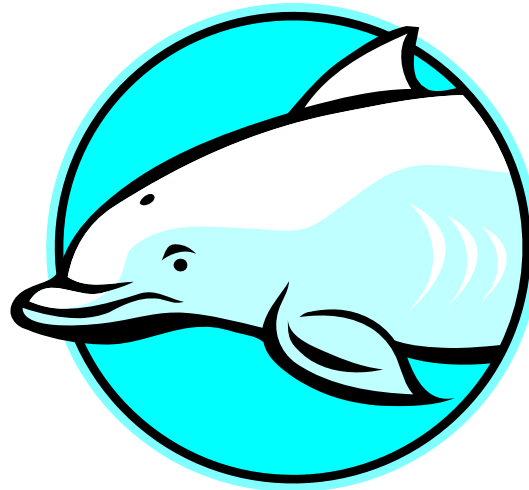


# Scotts Valley Middle School

Single School Plan for Student Achievement  
2010.2011

---



The Dolphins continue to leap towards excellence!

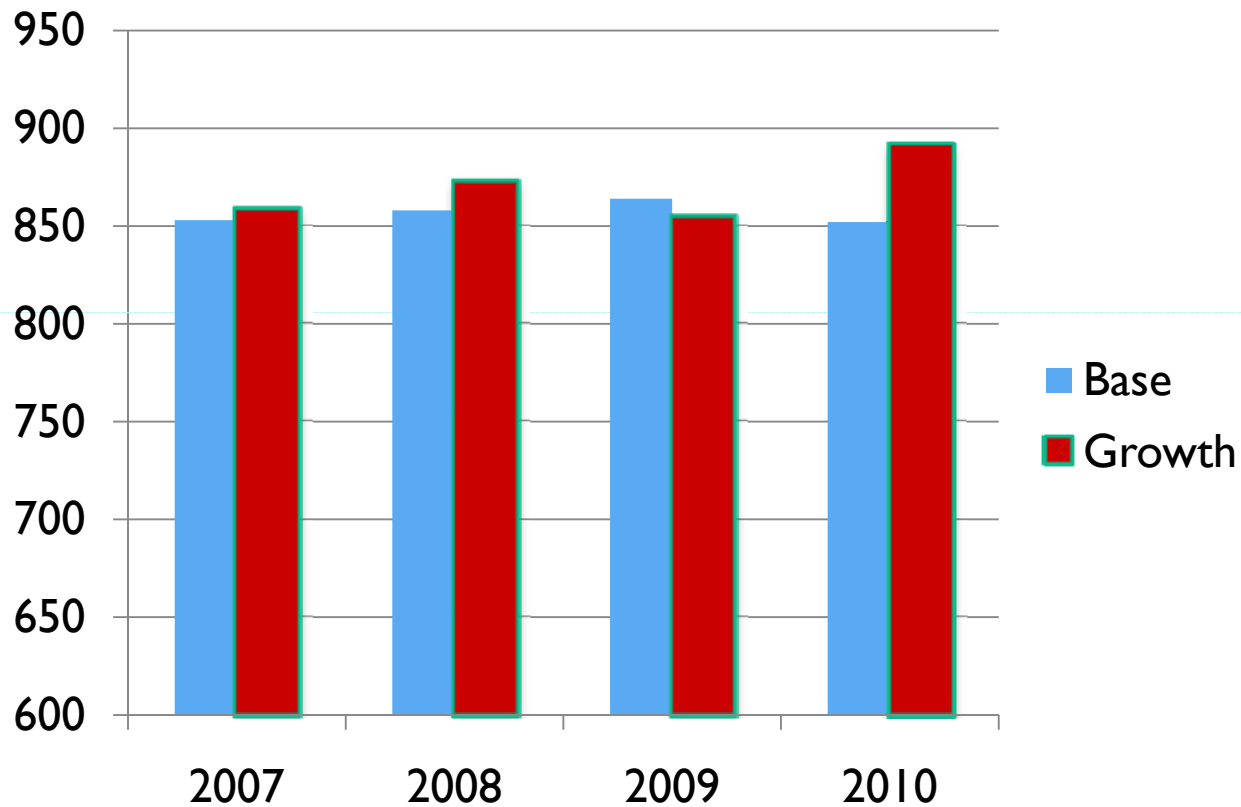




**+ 39**

**Celebrating an outstanding achievement...  
and remaining optimistic and committed to further growth**

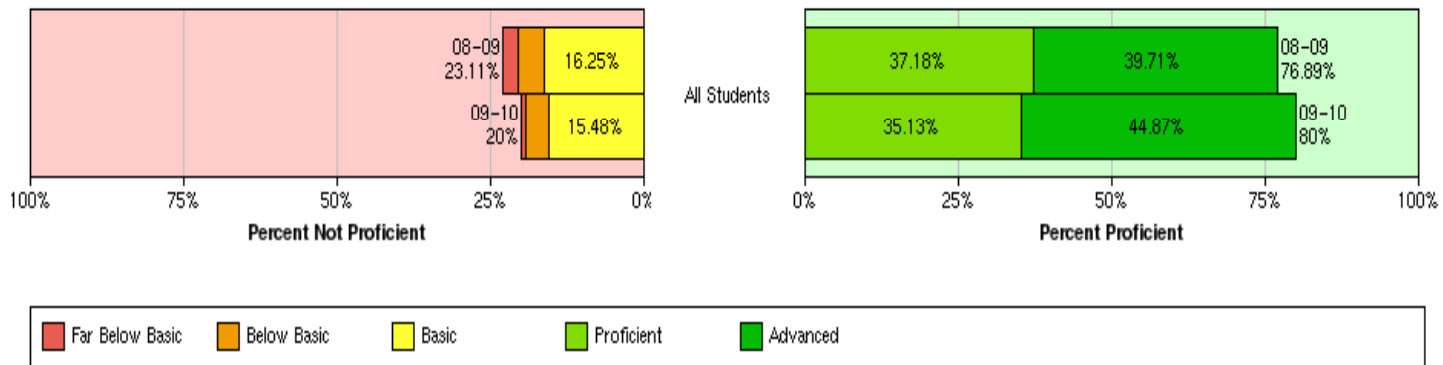
## SVMS Academic Performance Index (API) Growth



**The #1 middle school in the county**

# CST Proficiencies - ELA

Trend Analysis Graph



**Reflections:** Increase in overall proficiency.

**Previous Goal:** To increase percentage of students in our critical subgroups to meet AYP targets. *Goal met.*

**Goal:** All students 82% proficient, Subgroups 68% proficient

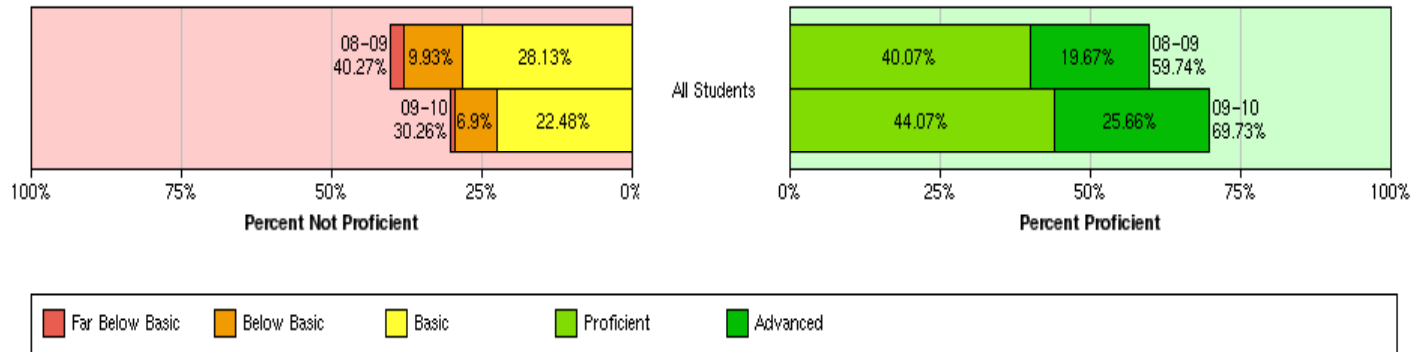
**Challenges:** Facilities (electronic infrastructure), ELD enrollment

**Strategies:** Embed ELD strategies within existing intervention programs, continued revision and improvement of Enrichment period

**Resources:** PDD time, content Literacy training, CLAD training

# CST Proficiencies - Math

Trend Analysis Graph



**Reflections:** 10% increase in overall proficiency levels.

**Previous Goal:** Increase percentage of students in the Proficient and Advanced categories by 11% with special consideration for the targeted subgroups. *1% short of goal overall, subgroup SWD and low-SES did not meet goal*

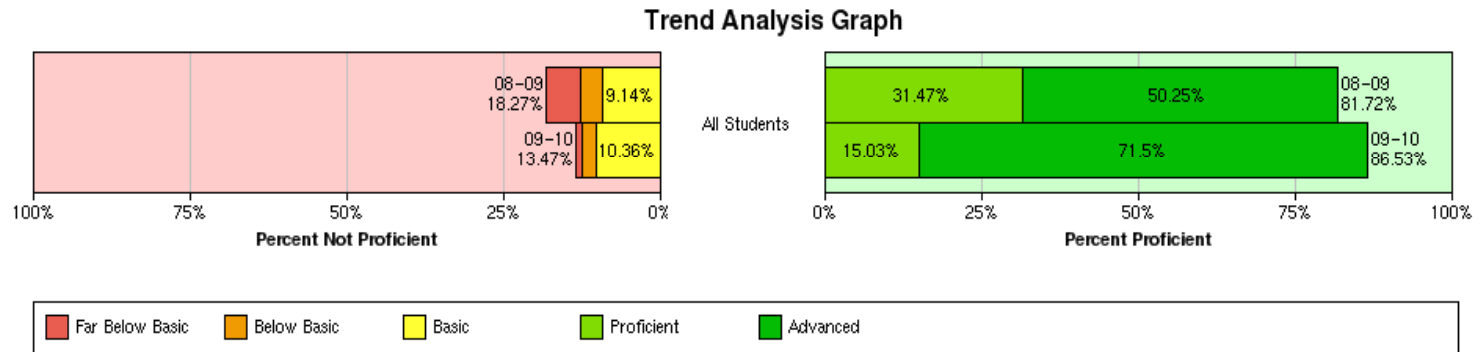
**Goal:** All students increase 2-5% depending on level, Subgroups 68% proficient

**Challenges:** Alignment amongst curriculum, STAR tests, and state expectations, varying level of competencies within a single math class, parental override of recommended placement

**Strategies:** Evaluate eligibility for CMA participation, multiple measures used (data) for student placement, participate in professional development, differentiated instruction

**Resources:** Data Director, COE professional development courses, UCSC diagnostic center

# CST Proficiencies - Science



**Reflections:** Approximately 5% increase of students scoring in the Proficient and Advanced ranges. Additionally, an approximately 5% decrease in students scoring in the Basic and below categories.

**Previous Goal:** Increase percentage of students in the Proficient and Advanced ranges to 85%. *Goal met.*

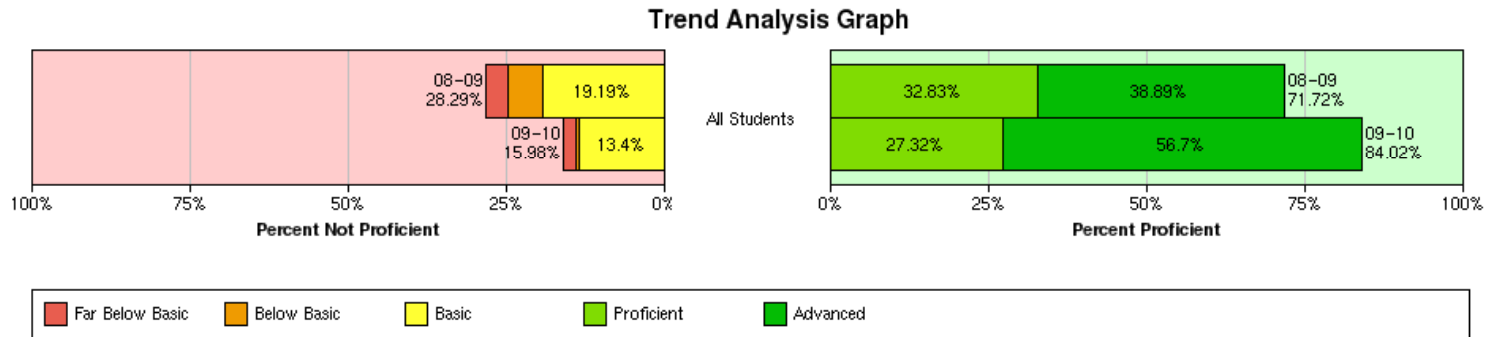
**Goal:** 87% proficient, Basic and below no more than 13%

**Challenges:** Facilities, funding for consumables and lab equipment

**Strategies:** Extended class periods for hands-on labs, real life experiences (field trips)

**Resources:** PTA, community based educational resources

# CST Proficiencies - History



**Reflections:** Increase in percentage of students scoring in the Proficient and Advanced ranges. Decrease in students scoring in the non-proficient range.

**Previous Goal:** Increase percentage of students in the Proficient and Advanced ranges from 70% to 75%. *Exceeded goal.*

**Goal:** Increase percentage of students in the Proficient and Advanced ranges from 84% to 88%.

**Challenges:** 8<sup>th</sup> grade textbook, little funding for supplemental facilities

**Strategies:** Active use of supplemental materials, small group instruction during Enrichment period

**Resources:** PTA



# Meeting the Needs of our Students

- **Academy Program**

- Enrichment Period
- Increased one-on-one and small group intervention time
- Elective opportunities for all grade levels
- Foreign language offered to seventh graders
- Students organized in “families” with teachers teamed to provide optimal support
- Increased flexibility of daily schedule to meet curriculum needs
- Defined daily collaboration time amongst subject area and grade level teachers



## Strategies used within Enrichment period

- Special needs students small group instruction without missing core instruction
- Lit Circles (book club) – active reading two times a week with parent volunteer
- Accelerated Reader – Progress monitoring of reading comprehension to regularly address student needs
- Peer Tutoring – Student to student teaching opportunity (application of knowledge) which promotes positive school climate and culture
- Title I, small group instruction
- ELD, small group instruction
- Content area remediation and intervention
- Test prep – content area and STAR
- Test/Absence work make-up
- Enrichment activities (ROV, Science Fair) – direct support and instruction for county based enrichment opportunities
- College and career counseling
- Direct instruction in test taking strategies



# Meeting the Needs of our Students

- Common Assessments in Data Director
- Essential Standards identified for all subject areas
- Subgroup students individually identified
- Bi-weekly special services team meetings
- Monthly administrative advisory meetings
- Positive recognition for student achievement
- Positive recognition for exemplary student citizenship
- Extra-curricular opportunities
- Two computer labs and one PC cart for teacher/student use
- Parents have increased access to teacher teams for conferencing

# Go Dolphins!

