

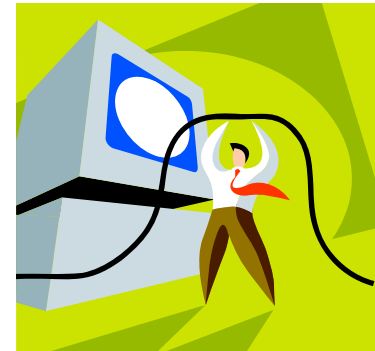
# Scotts Valley Unified School District

2010-11 Fall Data Collection



# CALPADS

- California Longitudinal Pupil Achievement Data System
- Individual Level Data
- Expanded data collection
  - Demographic (Students & Staff)
  - Academic (Students)
    - State Assessment
    - Discipline
  - Credentialing (Staff)



# CALPADS Reporting



- Four submission points
- Fall 1 – December
  - Focus on student demographics & enrollment
  - Prior year graduation & drop out statistics
- Fall 2 – February
  - Focus on staff demographic data
  - Student Course data

# CALPADS Reporting

- Spring 1
  - English Learner Counts
  - Immigrant Counts
- End of Year 1-4
  - Graduation & Course completions
  - Dropouts
  - Transcripts
  - Transfer data
  - Enrollment update

# Enrollment 2010-11



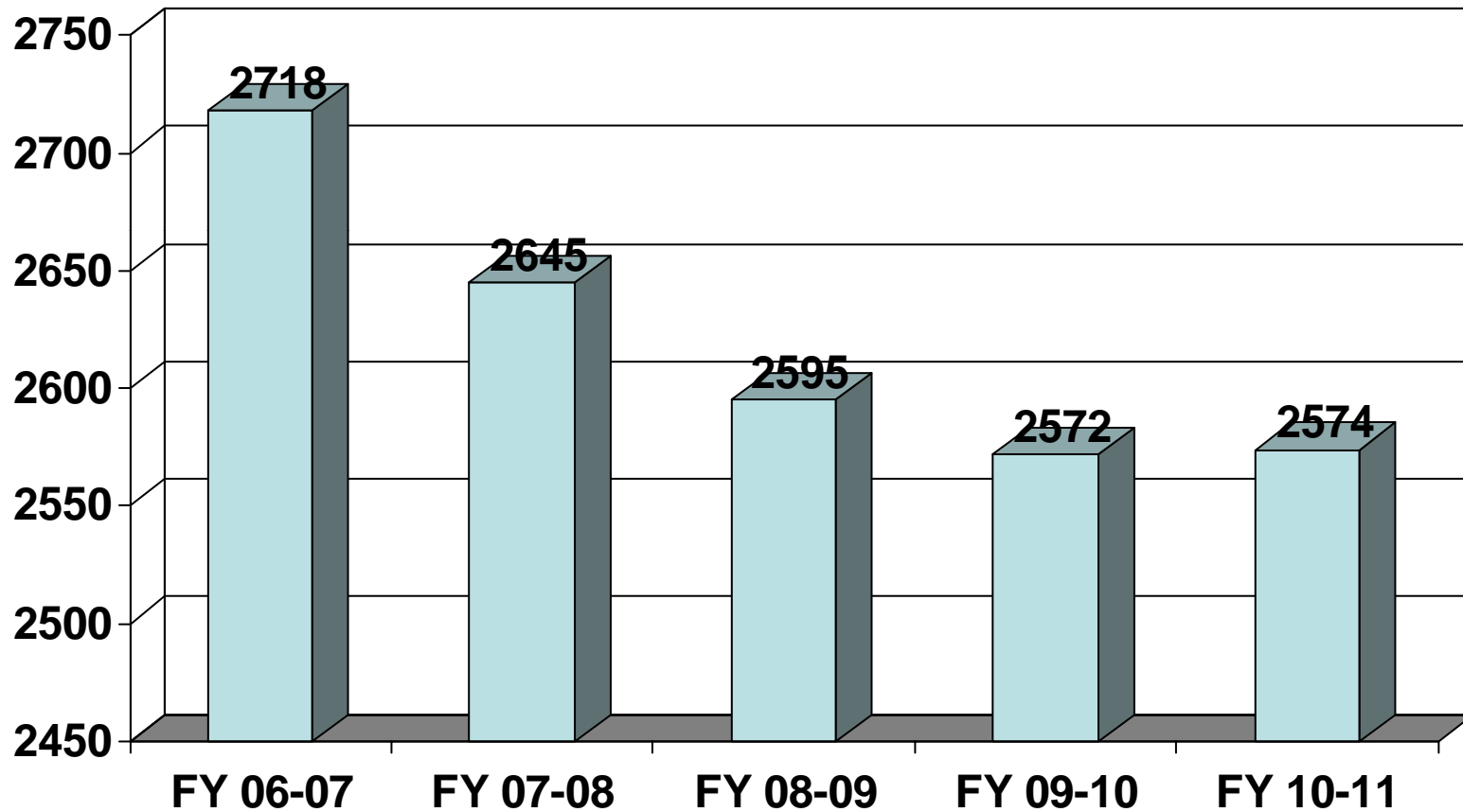
# Fall Enrollment – By Grade Level

<b>Grade Level</b>	<b>Brook Knoll</b>	<b>Vine Hill</b>	<b>SVMS</b>	<b>SVHS</b>	<b>NPS</b>	<b>TOTAL</b>	<b>Percentage</b>
Kindergarten	89	73				<b>162</b>	6.29%
1st	90	100				<b>190</b>	7.38%
2nd	97	93				<b>190</b>	7.38%
3rd	103	109				<b>212</b>	8.24%
4th	110	98			1	<b>209</b>	8.12%
5th	108	97				<b>205</b>	7.96%
6th			196			<b>196</b>	7.61%
7th			220			<b>220</b>	8.55%
8th			185		1	<b>186</b>	7.23%
9th				213	1	<b>214</b>	8.31%
10th				215	1	<b>216</b>	8.39%
11th				195		<b>195</b>	7.58%
12th				179		<b>179</b>	6.95%
<b>TOTAL</b>	<b>597</b>	<b>570</b>	<b>601</b>	<b>802</b>	<b>4</b>	<b>2,574</b>	<b>100.00%</b>

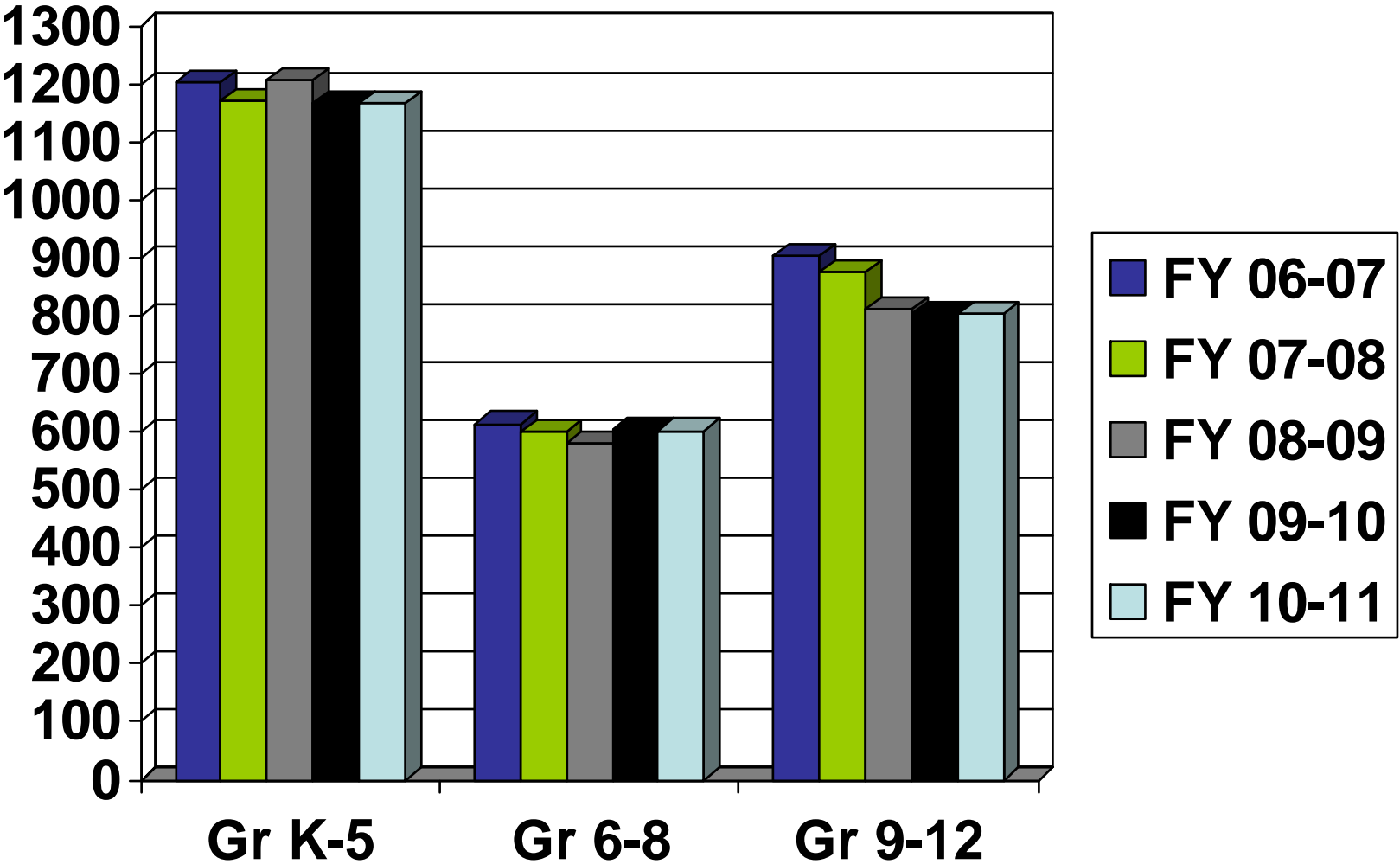
# Enrollment change from prior year

Grade Level	Brook Knoll	Vine Hill	SVMS	SVHS	NPS	TOTAL
Kindergarten	(3)	(18)	0	0	0	(21)
1st	(2)	7	0	0	0	5
2nd	(3)	(13)	0	0	0	(16)
3rd	2	18	0	0	(1)	19
4th	7	4	0	0	1	12
5th	(3)	7	0	0	0	4
6th	0	0	(29)	0	(1)	(30)
7th	0	0	39	0	0	39
8th	0	0	(11)	0	0	(11)
9th	0	0	0	(4)	0	(4)
10th	0	0	0	20	1	21
11th	0	0	0	6	0	6
12th	0	0	0	(22)	0	(22)
<b>TOTAL</b>	<b>(2)</b>	<b>5</b>	<b>(1)</b>	<b>0</b>	<b>0</b>	<b>2</b>

# 5 Year Enrollment Trend



# Enrollment by grade level - 5 year comparison



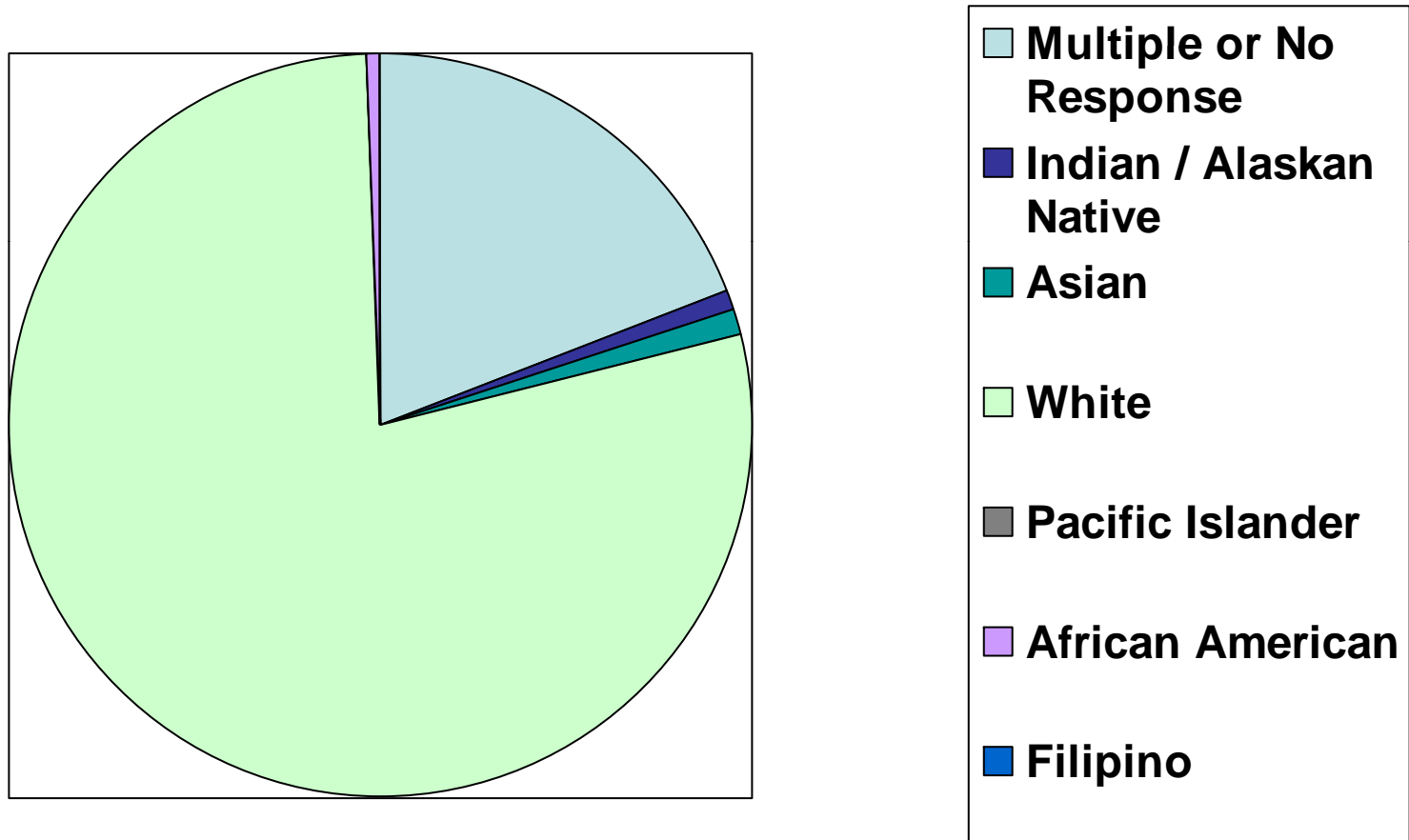
# Projections compared to actual

2010-11						
Projections	Brook Knoll	Vine Hill	SVMS	SVHS	NPS	Total:
Regular	580	545	586	759		2,470
Special Day Class	7	8	15	16	6	52
Independent Study	5		6			11
<b>TOTAL</b>	592	553	607	775	6	2,533

2010-11						
Actual	Brook Knoll	Vine Hill	SVMS	SVHS	NPS	Total:
Regular	586	562	580	785	0	2,513
Special Day Class	8	8	13	15	4	48
Independent Study	3	0	8	2	0	13
<b>TOTAL</b>	597	570	601	802	4	2,574

2009-10						
Actual vs. Projected	Brook Knoll	Vine Hill	SVMS	SVHS	NPS	Total:
Regular	6	17	-6	26	0	43
Special Day Class	1	0	-2	-1	-2	-4
Independent Study	-2	0	2	2	0	2
<b>TOTAL</b>	5	17	(6)	27	(2)	41

# Fall Enrollment – Race



# Race

<b>Race</b>	<b>Brook Knoll</b>	<b>Vine Hill</b>	<b>SVMS</b>	<b>SVHS</b>	<b>NPS</b>	<b>TOTAL</b>	<b>Percentage</b>
Multiple or No Response	108	110	121	155		<b>494</b>	19.19%
Indian / Alaskan Native	6	12	1	4		<b>23</b>	0.89%
Asian	9	6	6	2		<b>23</b>	0.89%
Pacific Islander	0	1	0	0		<b>1</b>	0.04%
Filipino	1	0	2	0		<b>3</b>	0.12%
Hispanic***						<b>0</b>	0.00%
African-American	3	6	0	0		<b>9</b>	0.35%
White	470	435	471	641	4	<b>2,021</b>	78.52%
<b>TOTAL</b>	<b>597</b>	<b>570</b>	<b>601</b>	<b>802</b>	<b>4</b>	<b>2,574</b>	<b>100.00%</b>

# Brook Knoll

<b>No Response</b>	12
<b>Multiple (Three or Four)</b>	
White, American Indian, Asian	2
White, American Indian, Filipino	9
White, American Indian, Pacific Islander	5
White, American Indian, Black	2
White, Filipino, Pacific Islander	1
White, Multiple Asian	1
White, American Indian, Pacific Islander, Asian	3
White, American Indian, Pacific Islander, Filipino	1
<b>Multiple (Two)</b>	
White, Asian	42
White, American Indian	28
White, Filipino	1
Filipino, American Indian	1

# Vine Hill

<b>No Response</b>	1
<b>Multiple (Three or Four)</b>	
White, American Indian, Asian	5
White, American Indian, Filipino	5
White, American Indian, Black	3
White, American Indian, Pacific Islander, Filipino	1
White, American Indian, Filipino, Asian	1
<b>Multiple (Two)</b>	
White, Asian	35
White, American Indian	50
White, Pacific Islander	1
White, Black	2
Multiple Asian	1
Black, Filipino	1
Black, Asian	3
Black, American Indian	1

# Middle School

<b>No Response</b>	3
<b>Multiple (Three or Four)</b>	
White, American Indian, Asian	7
White, American Indian, Filipino	6
White, American Indian, Black	6
White, Multiple Asian	1
White, Asian, Filipino	1
White, American Indian, Pacific Islander, Filipino	1
White, American Indian, Filipino, Black	2
<b>Multiple (Two)</b>	
White, Asian	28
White, American Indian	64
White, Black	1
Filipino, American Indian	1

# High School

<b>No Response</b>	0
<b>Multiple (Three or Four)</b>	
White, American Indian, Filipino	23
White, American Indian, Black	21
White, Asian, Pacific Islander	3
<b>Multiple (Two)</b>	
White, Asian	32
White, American Indian	76

# Inter-District Transfers



# Inter-District Transfers

		Reason					
<b>Transfers Out</b>	<b>#</b>	Program	Sibling	Work	Sports	Child Care	Other
Grade K-5	36	9	4	16	0	9	10
Grade 6-8	23	5	9	8	0	3	14
Grade 9-12	107	19	12	29	2	3	48
<b>Total</b>	<b>166</b>						

*Note: The "reason" totals will not necessarily add up to the total number of students as each form could have several or no reasons checked*

# Inter-District Transfers

<b>Transfers In</b>	<b>#</b>	Program	Sibling	Work	IB	Child Care	Other
Brook Knoll	90	24	34	30	N/A	21	23
Vine Hill	26	4	12	10	N/A	6	5
SVMS	59	13	28	15	N/A	8	25
SVHS	85	28	20	24	9	8	22
<b>Total</b>	<b>260</b>						

*Note: The "reason" totals will not necessarily add up to the total number of students as each form could have several or no reasons checked*

# Class Sizes



# Elementary Grades K-5

	Average Class Size						
	K	1	2	3	4	5	Combo
<b>Vine Hill</b>	24	24.5	30.3	29.7	28.3	32.7	30
<b>Brook Knoll</b>	29.7	26.7	29.5	30	29.7	30	30
<b>District</b>	<b>26.8</b>	<b>25.4</b>	<b>30</b>	<b>29.8</b>	<b>29</b>	<b>31.3</b>	<b>30</b>

*Note: Count as of 9/17/10*

# Class Size Penalty Rules

<b>Regulations</b>	<b>K</b>	<b>Gr 1-3</b>	<b>Gr 4-8</b>		<b>SVUSD 10-11</b>	<b>K</b>	<b>Gr 1-3</b>	<b>Gr 4-8</b>
Single Class	33	32			Single Class	30	31	
District Average	31	30			District Average	26.8	28.4	24.4
Statewide Average Pupil/Teacher Ratio (1964)			29.9		Statewide Average Pupil/Teacher Ratio (1964)			
District Pupil/Teacher Ratio (1964)			31.1		District Pupil/Teacher Ratio (1964)			

# Secondary Grades 6-12

<b>Subject Area</b>	<b>SVMS</b>	<b>SVHS</b>
Math	32.2	28.1
History/Social Science	30.6	33.2
English	32.1	31.9
Science	32.3	28.3
Visual & Performing Arts	32.6	24.7
Physical Education / Health	32.6	44.0
Foreign Language	30.8	28.4